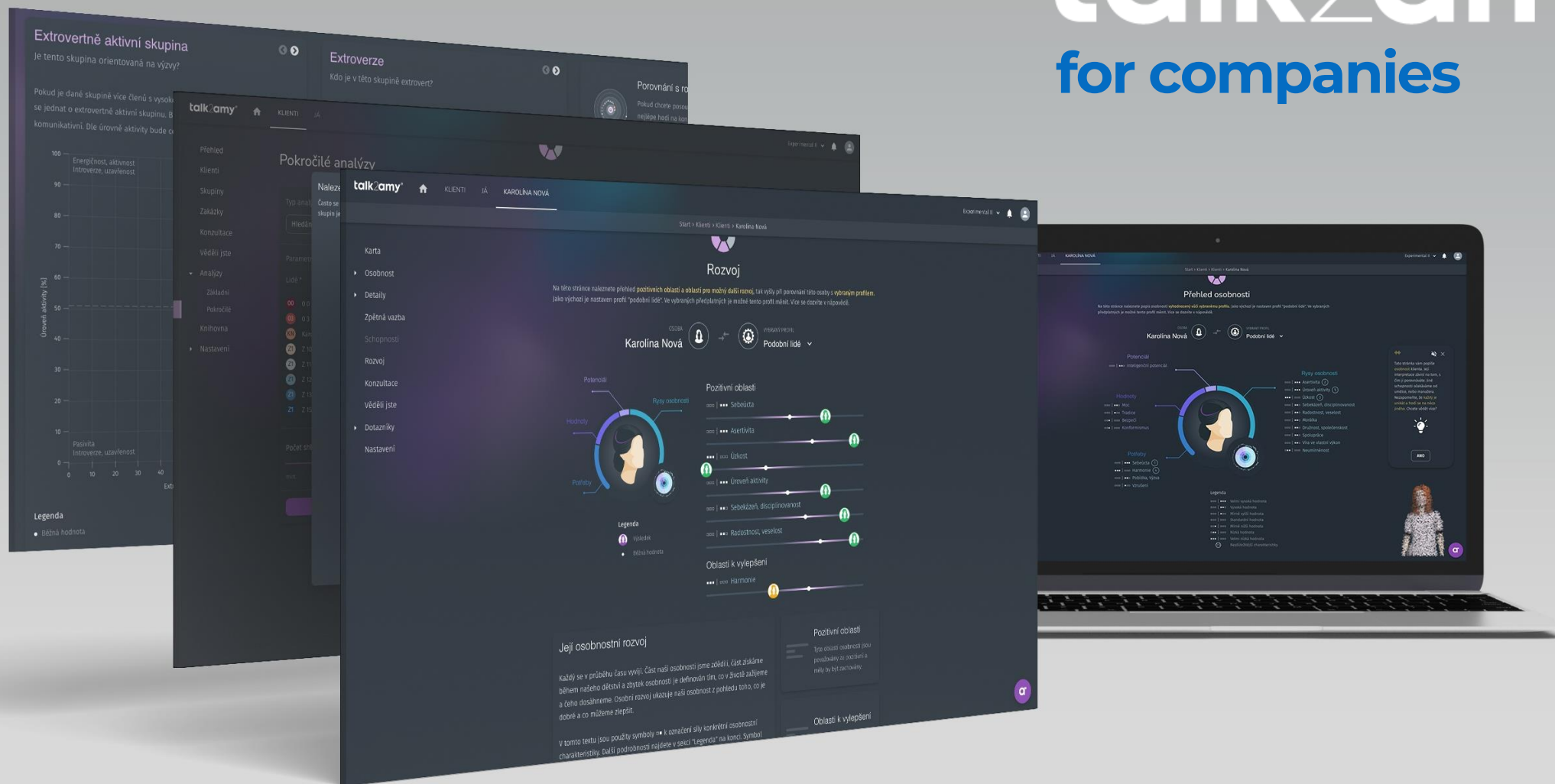


talk2amy[®]
for companies



How does Amy help?

- Selects candidates that fit into the team
- Assesses an employee fit for a new position
- Helps employees develop their potential
- Analyzes teams and the entire company
- Maps mood, burnout, satisfaction or relationships in teams
- Has a comprehensive view of human potential in company





Selection of candidates

Revolutionary technology allows you to get a more accurate assessment of applicants' personalities.



Employees development

Nurture your employees' growth and help them reach their goals and fulfill their roles.



Effective teams

Form teams where everyone can utilize their potential. Analyze the team as a whole or through its individual members.



Atmosphere & relations

You will gain invaluable insights into the dynamics of team relationships or the atmosphere in the company.

The most important from subscription

Facts

**23
min**

Duration of
initial talk

25+

Standard questionnaires
and tests *)

110+

Professional profiles
to compare *)

45+

Personality profiles
to compare *)

immediate

Availability
of results

3 min

Time to create
subscription

**one
month**

Trial version with
no obligations

**The most important
from subscription**

*) Availability depends on the selected plan

Meet Amy

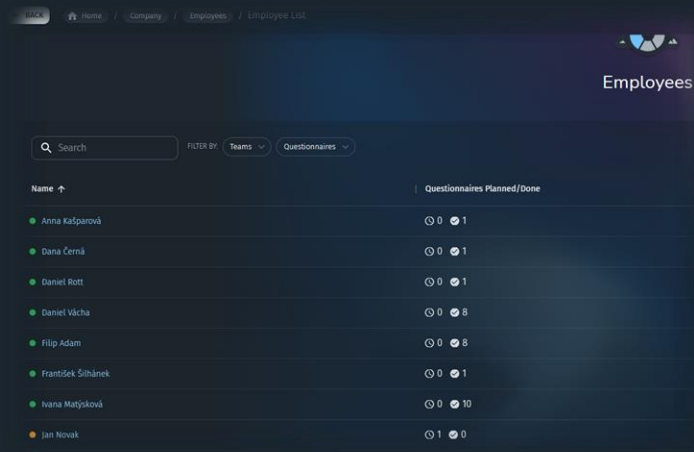


Talk with Amy

The talk Amy takes different forms, sometimes you just talk to her, other times you answer questionnaires. Candidates can interview in your office or remotely. Employees have access to the platform from anywhere.



What you get?



Name	Questionnaires Planned/Done
Anna Kašparová	0 / 1
Dana Černá	0 / 1
Daniel Rott	0 / 1
Daniel Vácha	0 / 8
Filip Adam	0 / 8
František Šibánek	0 / 1
Hana Matysková	0 / 10
Jan Novák	1 / 0



Management of employees and candidates

Amy allows you to manage employees and candidates easily and separately, with the possibility to sort them by positions or teams.



Personality summary

A comprehensive description of the employee/candidate's personality is displayed in visual form with a summary of the most important characteristics, including a warning about limit values.

What you get?



Detailed visualizations

To interpret the results, you can choose the level of detail that suits you. In the interactive graphs you can see individual characteristics of the personality and their explanations.

Personality

We can observe the personality of each person in how he/she acts, how he/she experiences different situations and also how he/she thinks. Each personality is original. Each of us is an individual with our own characteristics, way of acting and thinking. Personality traits are relatively constant, so it is often possible to predict how we will behave or feel in certain situations.

Personality traits

Each personality is a summary of different characteristics. These characteristics and traits are manifested mainly in the way we act. They are characteristic of our personality and do not change much. The most used model of traits consists of five basic traits and their opposites: Openness to experience – curiosity, ingenuity x caution; Conscientiousness – carefulness x carelessness; Extraversion – initiative, openness, sociability x restraint, loneliness; Agreeableness – friendliness, compassion x cold; Neuroticism – emotional stability x neuroticism.

Neuroticism

Generally, her reaction is calm and without significant emotional manifestations. She can react in this way even in situations that are commonly understood as stressful. She has the ability to keep her head and not succumb to short-term thinking or hasty reactions and manifestations. She is not worried about what she cannot control. Even if she is experiencing tension, she does not show it (her hands do not sweat, her voice does not tremble). She has no problem dealing with strangers. She does not succumb to trepidation. She is therefore a resilient, emotionally prudent and stable person. She has no significant characteristic in this section.

What is Neuroticism? ~

Extraversion

The high values of extraversion show how very sociable a person she is. She likes society and people in general. She likes to be anywhere something is going on. She has no problem asserting herself among strangers. People often remember her. She adapts to changes quickly. She has no problem talking on any topic. Sometimes she can act harshly because she is usually full of energy. Her criticisms can sometimes lead to misjudgment. "First I act and then I think". In society, she is sought after and welcomed. She might be sought after for advice or to resolve conflicts. She has no problem with criticism and feedback. She is aware of her own emotions and can observe the emotions of others. Some reactions and tendencies may be of an irritable nature, of which she is aware. Her main characteristics are: "Very strong trait: Gregariousness (Sociability)", "Strong trait: Activity Level (Energy, Activeness)". You can find out more in the following chapters.

What is Extraversion? ~

Very strong trait: Gregariousness (Sociability)

She is a collective person. She likes groups around her, whether friends or a team of co-workers. She likes to be surrounded by people, and draws energy and ideas from them. Group thinking makes her own thinking easier. She likes the energy that emerges from groups of people.

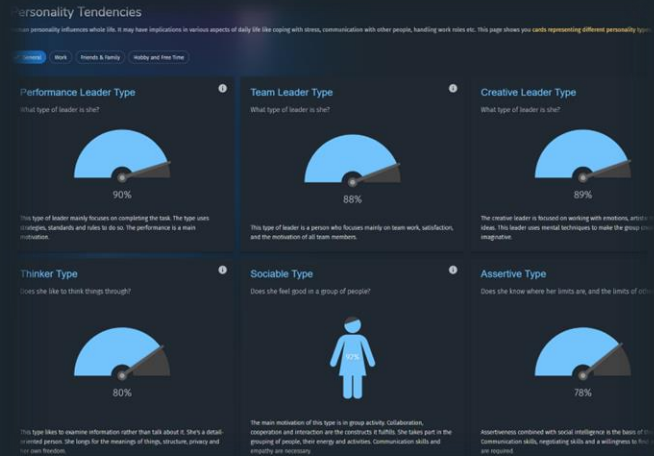
What is Gregariousness? ~



Textual interpretation

Amy also describes personality in text based on the level of detail you choose. You will learn not only which characteristics are important, but also what they mean.

What you get?



Personality tendencies

Each person's personality influences areas such as stress management or communication with other people. Thanks to the cards, you will find out how the personality manifests itself in real life.



Personality match

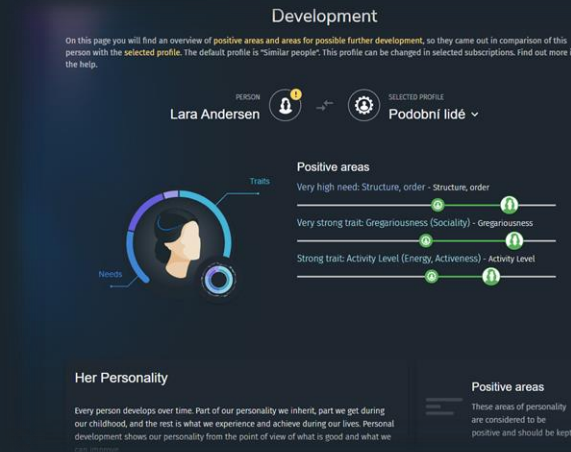
Amy also shows how the personality matches different personality types and professional profiles.

What you get?



Personality reactions

An experimental function of the platform is to predict the essential emotional response for selected personality in the selected situation.



Personality development

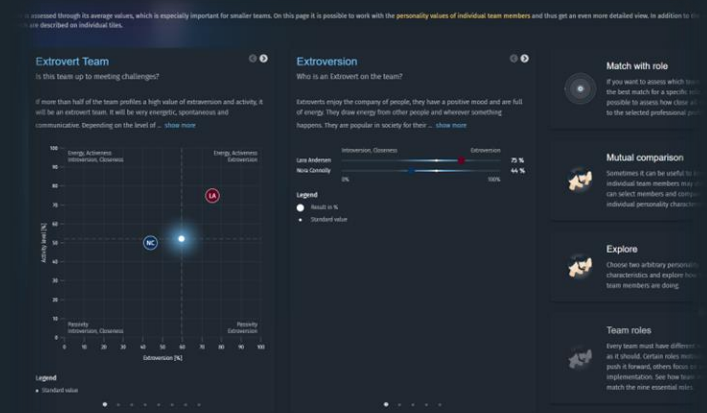
Amy will also recommend areas where you can continue to work and develop based on the professional profile you're comparing to.

What you get?



Team summary

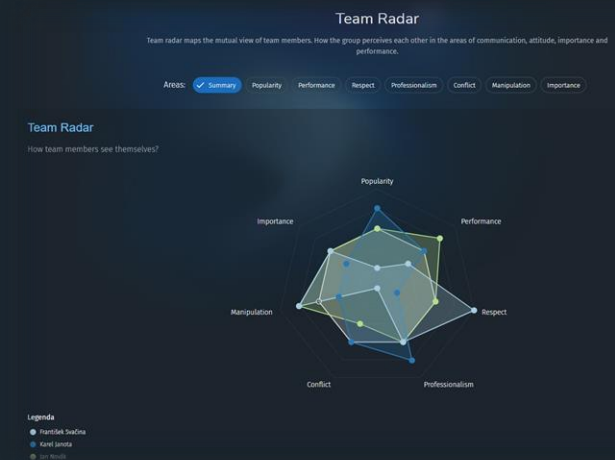
A comprehensive view of the team in both visual and text forms. It presents the most important characteristics calculated from the average values of all team members.



Team members analysis

Enables detailed analysis of the team through all individual members. Here you can compare team members, find out the match of members with the role, assess team roles, etc.

What you get?



Atmosphere in Team and company

The new questionnaires will make it possible to find out not only the atmosphere in the team, but also in the whole company. They answer fundamental questions about human potential.

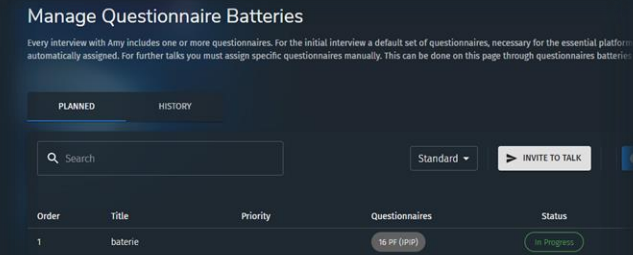


Feedback

With the help of Radar, it is possible to find out the basic sociological ties of team members.

The combination of feedback and self-view will allow managers to grow and develop further.

What you get?



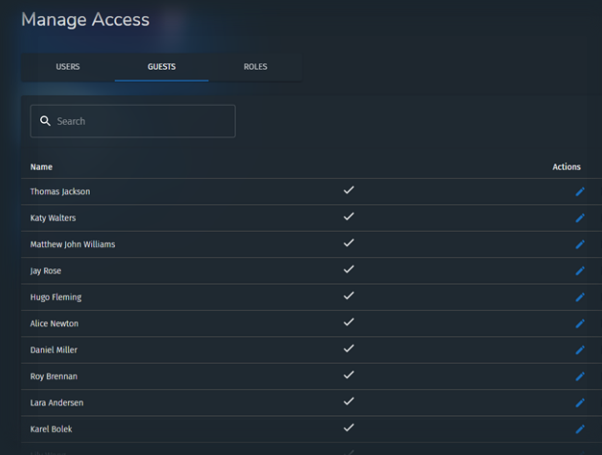
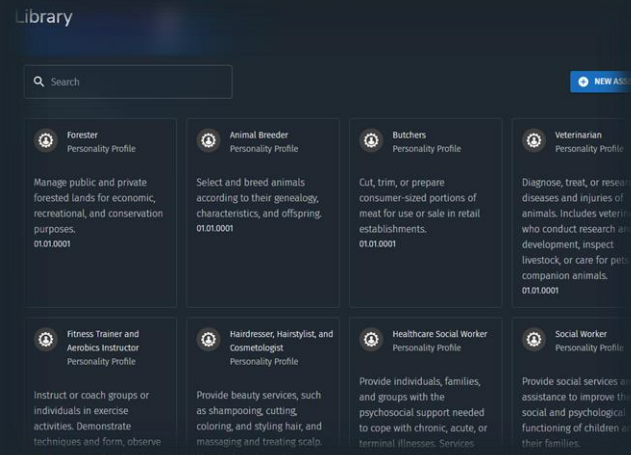
Analysis

Through essential or advanced analysis, you can analyze individual people's data, work with a group of people, and explore their relationships according to your needs.

Battery management

You can influence what Amy asks by selecting specialized questionnaires to include in the test battery.

What you get?



✓ Library

Data that can be reused and shared within a subscription is stored in a library. For example, you can work with personality profiles or descriptions of situations.

✓ Manage access

The platform allows you to create users, assign roles to them, or invite users to a subscription.

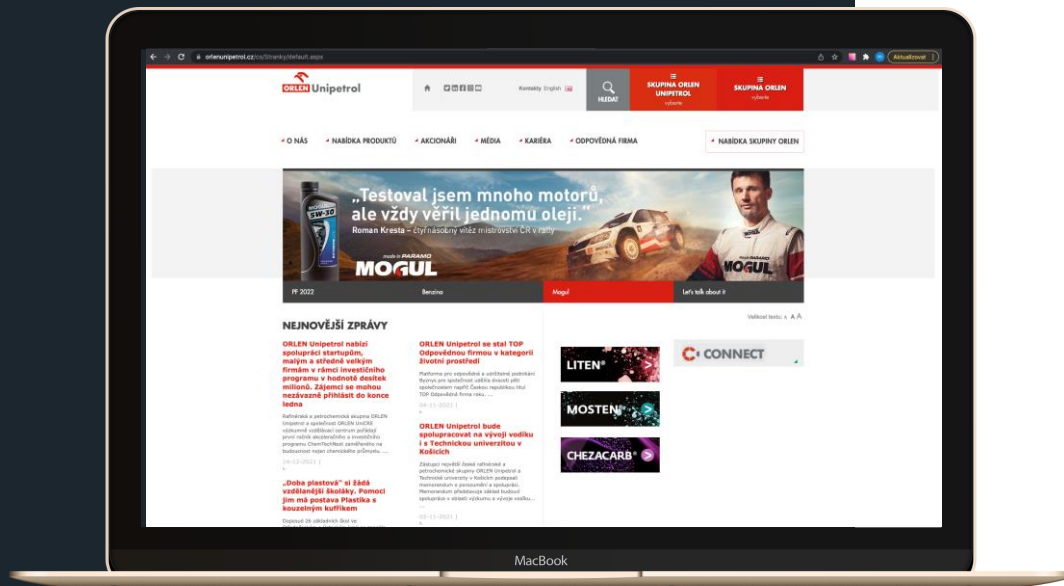
Who did we help?

ORLEN UNIPETROL



“As part of an internal development project, we successfully used the Talk2amy platform to determine the personal potential of more than a hundred of our employees.”

PETRA JIRKOVSKÁ
Head of the Recruitment and Education Department



Who did we help?

VÝSTAVBA SÍTÍ KOLÍN



“Within AC, the Talk2Amy platform helped us motivate our employees and determine the next development plan. The resulting reports brought objective results that can be used both for the work of the HR department as well as managers.”

HÁLOVÁ GABRIELA
HR Generalist, Výstavba sítí Kolín a.s.

